



The Network of Excellence on Land Governance in Africa

*Striving to improve
education and
training for good
land governance
across Africa*

NELGA Research

Background

To strengthen human and institutional capacities for the implementation of the AU agenda on land, the African Land Policy Centre (ALPC), formerly Land Policy Initiative (LPI), has established a **Network of Excellence on Land Governance in Africa (NELGA)** in cooperation with Germany, World Bank and other partners.

NELGA is a partnership of leading African universities and research institutions with proven leadership in education, training and research on land governance. Currently NELGA has more than 50 partner institutions across Africa.

NELGA research component

The World Bank leads NELGA's accompanying research component. It aims at promoting **demand-driven research** on land governance and strengthening **monitoring and evaluation** of land policy processes in Africa.

NELGA research activities create a link between applied research on land governance and policy processes and **generate evidence based knowledge** on land governance to inform policy makers.



Household data collection, instrument testing with a respondent

Functions of NELGA research



Generate **high-quality research products** and translate analytical findings into **operational engagement** and **decision-making processes**.



Mainstream land governance issues in land-related education to **enhance training opportunities** and **curricula** on land governance.



Strengthen analytical capabilities of existing African research institutions.



Expand data availability on land governance and facilitate access, such as through **data repositories**.

Research activities

To date the World Bank and NELGA partner institutions have successfully implemented the following projects:

- **Impact evaluations** of innovative land related projects to inform subsequent roll-out;
- Development and test of **new methodology** and **technologies** (e.g. satellite imagery) for analysing land issues;
- Implementation of **Land Governance Assessment Framework** in eight countries and kick start of follow up activities;
- **Development of training, Master and PhD courses** in the area of land governance;
- Support of Bachelor, Master and PhD students in pursuing **land related research** through the NELGA scholarship programme;
- Co-organising **national, regional and international events** in land governance (workshops, conferences, multi-stakeholder dialogues, etc.).

Achievements

LGAF continuation

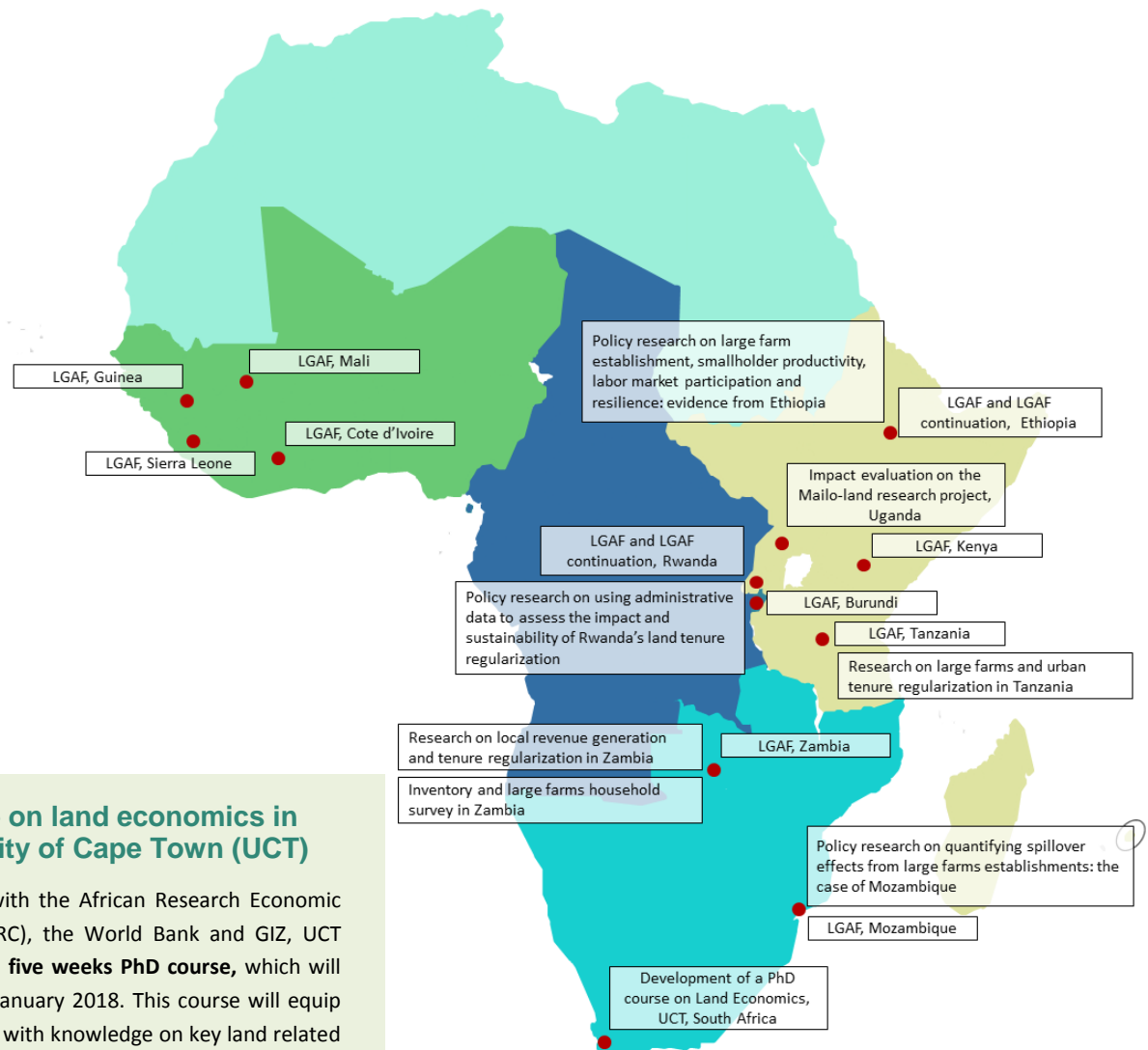
The Land Governance Assessment Framework (LGAF) was designed by the World Bank (2009) to support countries in **assessing their land governance policies and practices**, by relying on expert workshops on various dimensions of land governance.

In 2017, GIZ in cooperation with NELGA partner institutions and World Bank started to support LGAF continuation processes in **Ethiopia** and **Rwanda** with the aim to translate LGAF recommendations into **policy actions**.

Impact evaluation on the Mailo-land research project in Uganda

The Research Department of the World Bank in cooperation with the Ugandan Bureau of Statistics is collecting **the baseline data** for the impact evaluation on the Mailo-land research project.

The research is aimed to **assess the impacts** of strengthening the security of Mailo tenants on their land with a focus on investments, land conservation measures, agricultural productivity and income diversification.



PhD course on land economics in the University of Cape Town (UCT)

In partnership with the African Research Economic Consortium (AERC), the World Bank and GIZ, UCT has developed a **five weeks PhD course**, which will be launched in January 2018. This course will equip 20 PhD students with knowledge on key land related issues and key tools for analysis.

Published by Strengthening Advisory Capacities for Land Governance in Africa (SLGA) Programme

Fitawrari Damtew Road
In front of AU Gate No. 3
P.O. Box 100009
Addis Ababa, Ethiopia
Tel.: +251 11 470 33 55

As at November, 2017

Responsible Marc Nolting, Deutsche Gesellschaft für Internationale Zusammenarbeit (GIZ)

Photos ©GIZ/Marguerite Duponchel

Design/Layout W4 Büro für Gestaltung, Frankfurt/Germany

SLGA is responsible for the content of this publication